

Light efficiency:

52 Lumen/Watt

Light quality:

CRI: 82.2

Color temperature:

3028 K

Output: 1600 lm

Peak: 7331 cd

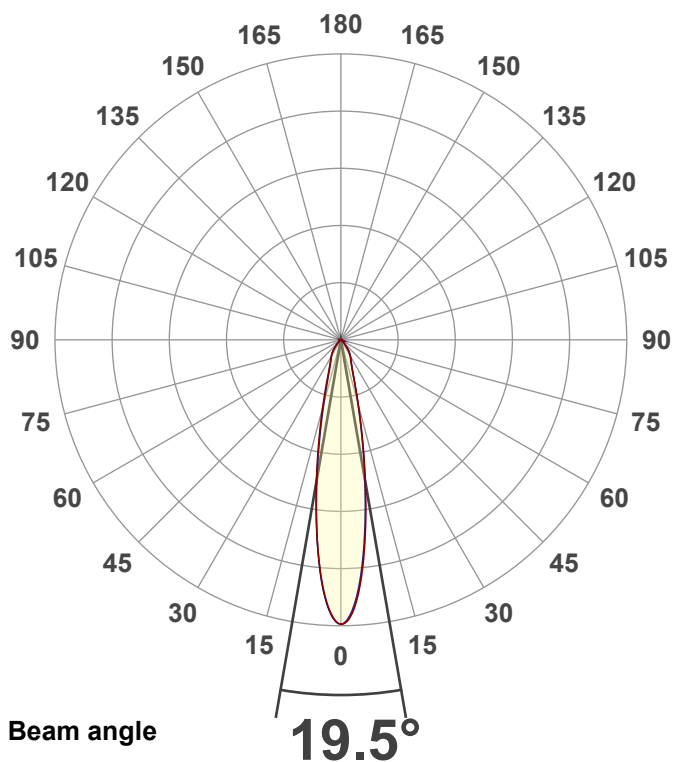
Power: 31.0 W

PF: 1.0



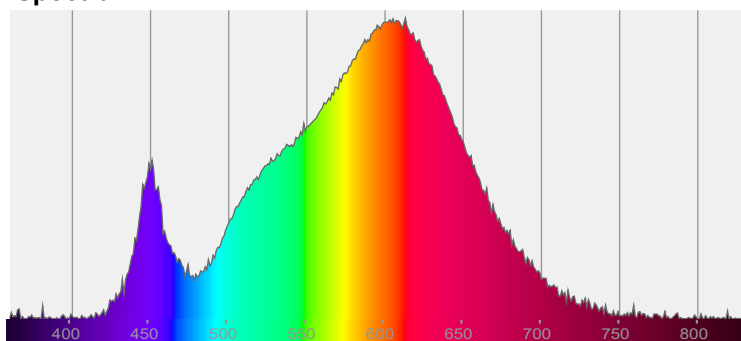
NU3-RD-SW-20LM-30K-80-15D-HET-WH-WH

Date and time:  
2/21/2023 2:50:59 PM



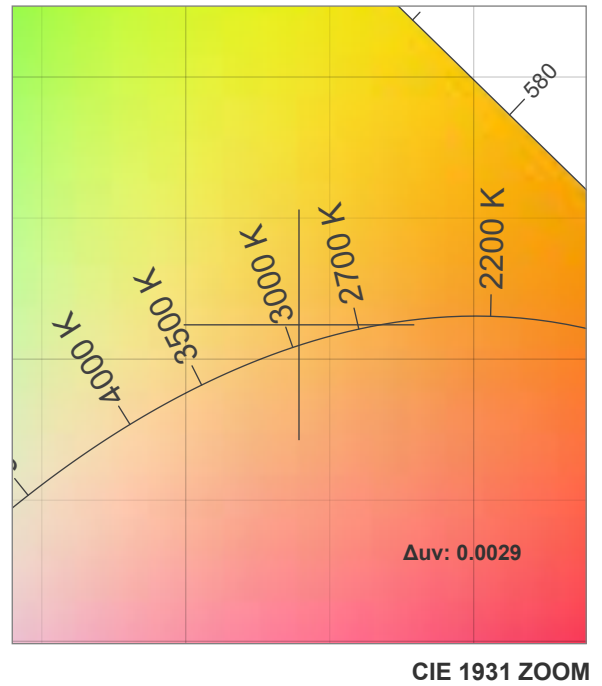
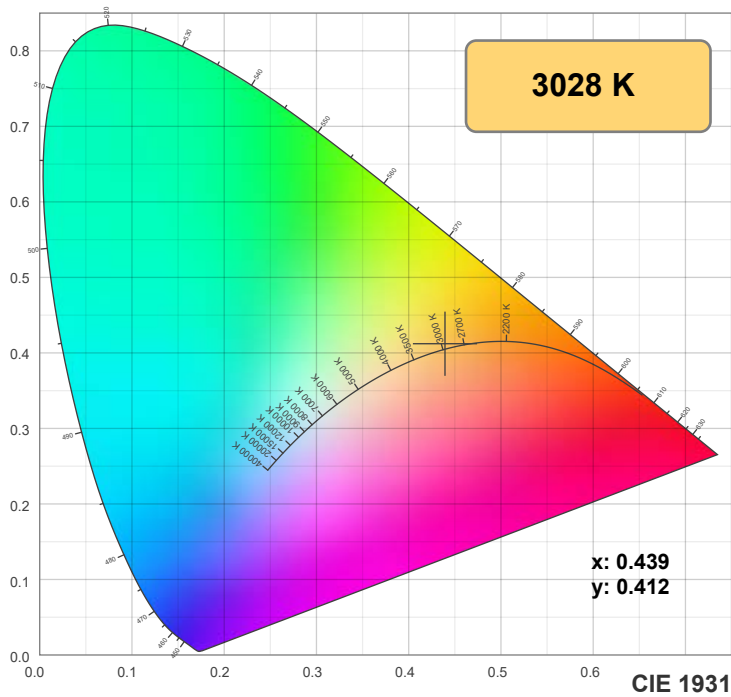
CIE 1931  
x: 0.439  
y: 0.412

Spectra

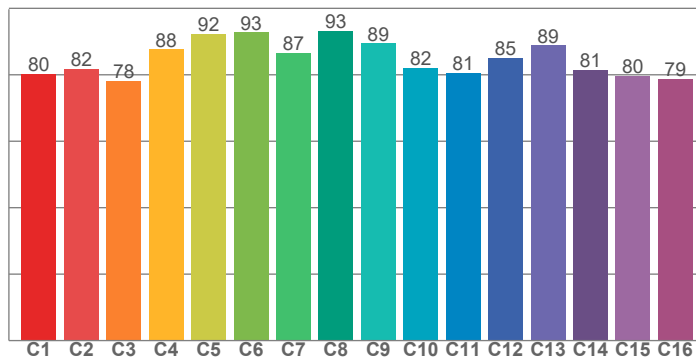


Power

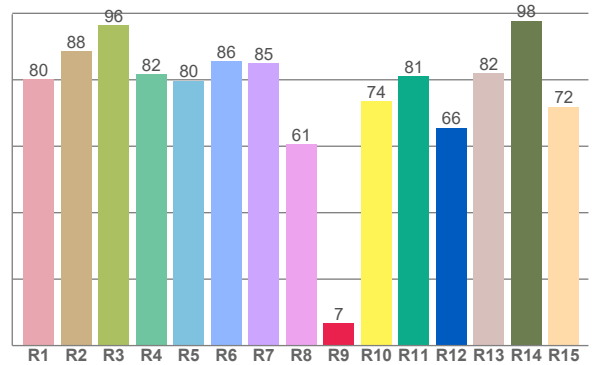
Voltage: 123 V  
Current: 0.252 A  
Frequency: 0 Hz



**TM30: 84.9**



**CRI: 82.2 (R1-R8)**



CRI R values, only R1-R8 are used to calculate final CRI value

R1	R2	R3	R4	R5	R6	R7	R8	R9	R10	R11	R12	R13	R14	R15
80.2	88.5	96.4	81.7	79.7	85.7	85.0	60.6	6.6	73.6	81.0	65.6	81.9	97.8	71.9

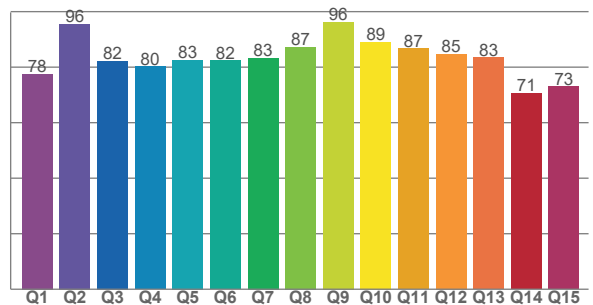
TM30 C values, 16 binned values out of total of 99 C values

C1	C2	C3	C4	C5	C6	C7	C8	C9	C10	C11	C12	C13	C14	C15	C16
80.2	81.7	78.2	87.6	92.4	92.7	86.5	93.2	89.4	82.1	80.6	85.0	88.9	81.5	79.6	78.8

CQS Q values

Q1	Q2	Q3	Q4	Q5	Q6	Q7	Q8	Q9	Q10	Q11	Q12	Q13	Q14	Q15
77.5	95.6	82.2	80.2	82.5	82.3	83.3	87.3	96.2	89.1	86.7	84.8	83.5	70.6	73.0

**CQS: 82.2**



## Color parameters

Color temperature	Color rendering index	Red component	Color fidelity	Color gamut	Color quality scale	Color coordinate cie 1931	Color coordinate cie 1931	Color coordinate	Color coordinate	Color deviation from black body
CCT	CRI	CRI R9	TM30 Rf	TM30 Rg	CQS	x	y	u	v	Δuv
3028 K	82.2	6.6	84.9	96.2	82.2	0.439	0.412	0.249	0.350	0.0029

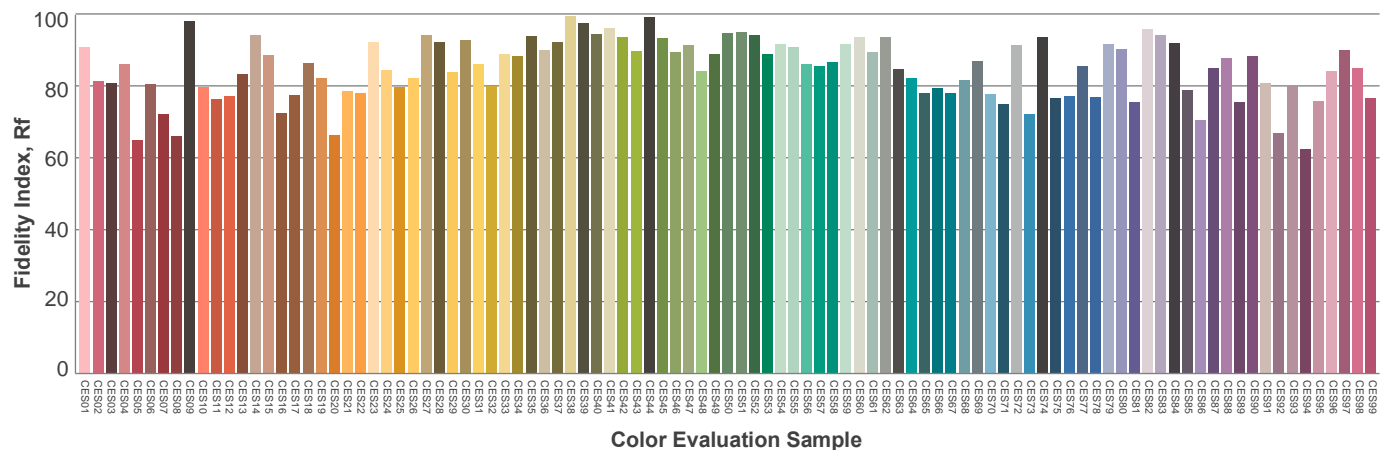
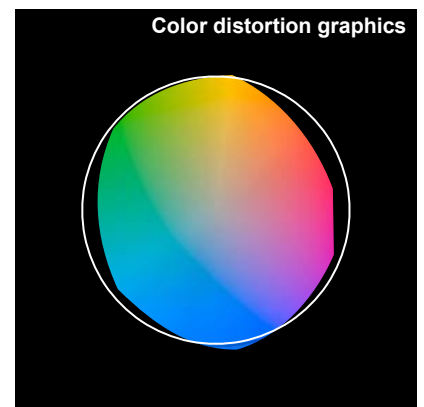
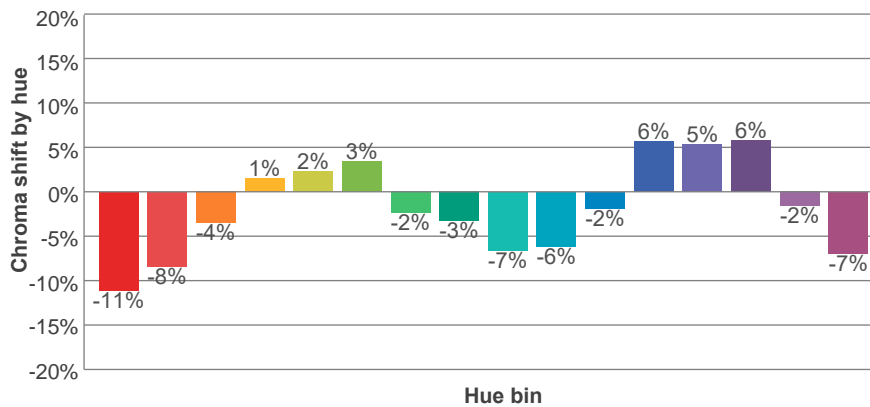
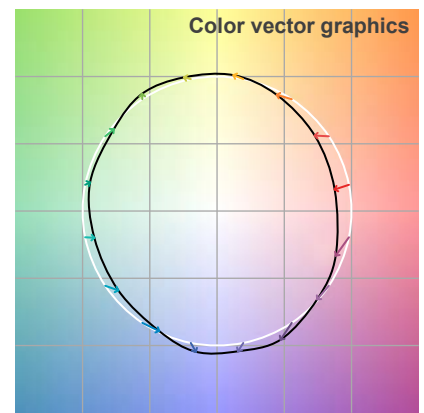
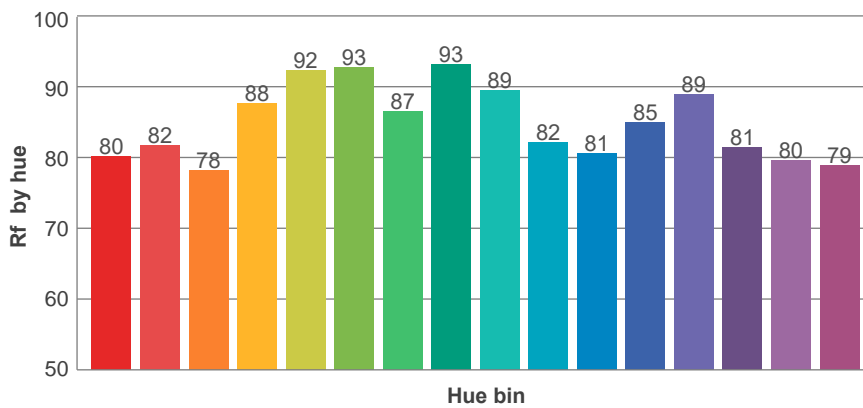
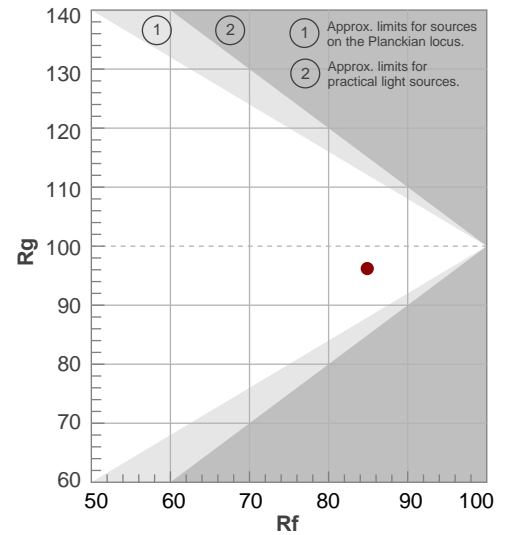
**Rf 84.9**

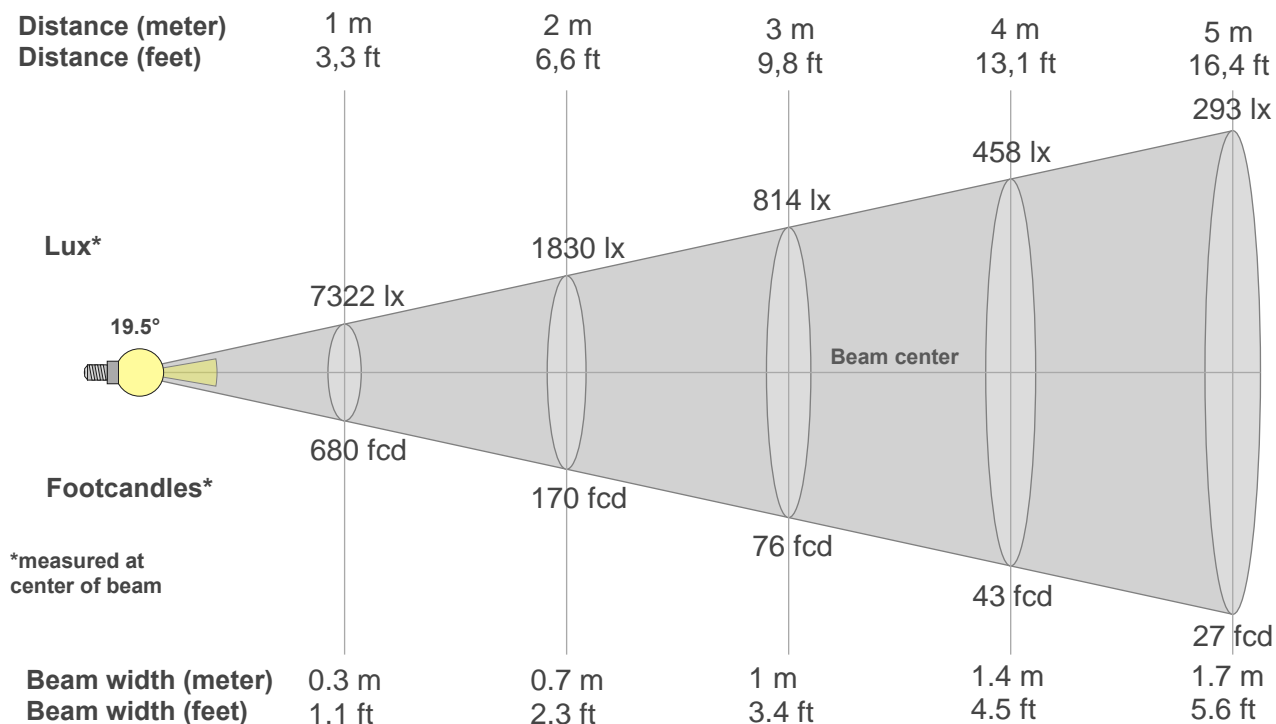
Fidelity index Rf

**Rg 96.2**

Gamut index Rg

Hue Bin	R <sub>f</sub>	Graphic shifts (%)	
		Chroma	Hue
1	80	-11%	-1%
2	82	-8%	6%
3	78	-4%	11%
4	88	1%	8%
5	92	2%	5%
6	93	3%	-2%
7	87	-2%	-8%
8	93	-3%	-2%
9	89	-7%	2%
10	82	-6%	8%
11	81	-2%	14%
12	85	6%	5%
13	89	5%	-5%
14	81	6%	-14%
15	80	-2%	-13%
16	79	-7%	-15%





#### Beam intensities from 1-20m

1m	2m	3m	4m	5m	6m	7m	8m	9m	10m	11m	12m	13m	14m	15m	16m	17m	18m	19m	20m
3.3ft	6.6ft	9.8ft	13.1ft	16.4ft	19.7ft	23ft	26.2ft	29.5ft	32.8ft	36.1ft	39.4ft	42.7ft	45.9ft	49.2ft	52.5ft	55.8ft	59.1ft	62.3ft	65.6ft
7322lx	1830lx	814lx	458lx	293lx	203lx	149lx	114lx	90lx	73lx	61lx	51lx	43lx	37lx	33lx	29lx	25lx	23lx	20lx	18lx
680.2fcd	170.1fcd	75.6fcd	42.5fcd	27.2fcd	18.9fcd	13.9fcd	10.6fcd	8.4fcd	6.8fcd	5.6fcd	4.7fcd	4fcd	3.5fcd	3fcd	2.7fcd	2.4fcd	2.1fcd	1.9fcd	1.7fcd

#### Intensities in 0° c-plane

0°	2°	4°	6°	8°	10°	12°	14°	16°	18°	20°	22°	24°	26°	28°	30°	32°	34°	36°	38°
7322	7129	6530	5637	4617	3612	2727	2023	1501	1139	899	750	651	581	529	478	426	374	311	248
100%	97%	89%	77%	63%	49%	37%	28%	21%	16%	12%	10%	9%	8%	7%	7%	6%	5%	4%	3%

#### Intensities in 90° c-plane

0°	2°	4°	6°	8°	10°	12°	14°	16°	18°	20°	22°	24°	26°	28°	30°	32°	34°	36°	38°
7322	7077	6448	5541	4520	3530	2673	1986	1484	1138	914	771	673	604	546	495	444	388	328	266
100%	97%	88%	76%	62%	48%	37%	27%	20%	16%	12%	11%	9%	8%	7%	7%	6%	5%	4%	4%

#### Intensities in 180° c-plane

0°	2°	4°	6°	8°	10°	12°	14°	16°	18°	20°	22°	24°	26°	28°	30°	32°	34°	36°	38°
7322	7069	6445	5559	4563	3612	2772	2099	1585	1222	966	800	682	602	536	487	432	383	321	263
100%	97%	88%	76%	62%	49%	38%	29%	22%	17%	13%	11%	9%	8%	7%	7%	6%	5%	4%	4%

#### Intensities in 270° c-plane

0°	2°	4°	6°	8°	10°	12°	14°	16°	18°	20°	22°	24°	26°	28°	30°	32°	34°	36°	38°
7322	7088	6468	5559	4524	3528	2660	1971	1461	1119	895	752	661	589	534	486	438	381	321	257
100%	97%	88%	76%	62%	48%	36%	27%	20%	15%	12%	10%	9%	8%	7%	7%	6%	5%	4%	4%

Beam angle 50%	Field angle 10%	Cutoff angle 2,5%	Intensity ratio in 120° cone	Intensity ratio in 90° cone
19.5°	45.1°	81.3°	99.0%	97.1%